

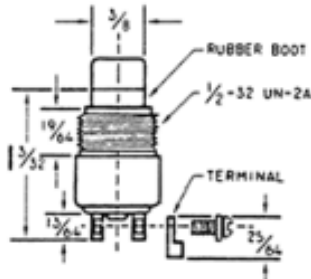
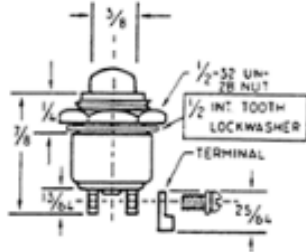


## **Audio Frequency Plugs & Jacks Push-Button Switches**

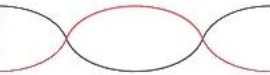
*Consistent Product Reliability*

## Nexus Switches

### Nexus 200 Series



<b>AC Rating:</b>	10 amps at 115 vac (Resistive load) 5 amps at 115 vac (Inductive load) 3 amps at 115 vac (Lamp load)
<b>DC Rating:</b>	10 amps at 28 vdc (Resistive load) 5 amps at 28 vdc (Inductive load) 3 amps at 28 vdc (Lamp load)
<b>Type 7 Contact Configuration:</b>	Ratings are ONE HALF amperage loads shown above.
<b>Mechanical Life:</b>	500,000 cycles
<b>Action:</b>	Momentary Snap or Push-Pull (as specified)
<b>Plunger Travel:</b>	.085" +/- .015"
<b>Series 20 &amp; 30 Operating Force:</b>	3 to 5 pounds momentary 1/2 to 2 pounds push-pull
<b>Series 22 &amp; 32 Operating Force:</b>	2 to 3 pounds
<b>Weight:</b>	.050 pound maximum
<b>Case and Adapter:</b>	Aluminum alloy, 2011-T3, anodized in accordance with MIL-A-8825
<b>Plunger and Button:</b>	Glass-filled nylon or nylon in accordance with ASTM D4086
<b>Body Insulation:</b>	Diallyl phthalate in accordance with MIL-M-14
<b>Terminals:</b>	Threaded 2-56 NC-2B for use with hardware or solder type connection
<b>Terminal Hardware:</b>	Solder-type wire terminals, with terminal mounting screws and lockwashers, supplied with each switch.
<b>Mounting:</b>	Switch with mounting adapters C, F, G or H supplied with a 5/8"-24 UNEF-2B nut and internal tooth lockwasher. Basic 200 Series and 300 Series switches supplied with a 1/2"-32 UNEF-2B nut and internal tooth lockwasher.
<b>Special:</b>	Additional types of mounting, button styles, colours, and other variations are available on special order



## Nexus Switches

### Nexus 300 Series



#### How To Determine The Nexus Switch Part Number

##### Switch Series

- 20 - Standard momentary or push-pull switches.
- 22 - Standard switches with 2-pound operating force.
- 30 - Dustproof momentary or push-pull switches.
- 32 - Dustproof switches with 2-pound operating force.

##### Contact Arrangements

- 1 - SPNO - Single pole, normally open
- 2 - SPNC - Single pole, normally closed
- 3 - 2-CIR - Two circuit
- 4 - 3-TNO - Three terminal, normally open
- 5 - 3-TNC - Three terminal, normally closed
- 6 - SPDT - Single pole, double throw
- 7 - DPST - Double pole, single throw, normally open

##### Adapter Type

- 0 - Basic switch (no adapter)
- A - Switch with MIL Type A adapter
- B - Switch with MIL Type B adapter
- C - Switch with MIL Type C adapter
- E - Switch with MIL Type E adapter
- F - Switch with MIL Type F adapter
- G - Switch with MIL Type G adapter
- H - Switch with MIL Type H adapter

##### Adapter Colour

- B - Standard colour, black anodized
- R - Red anodized
- C - Clear anodized (aluminum colour)
- 0 - Without adapter

##### Button Style

- Numbers 1 through 7, see
- \*\* Special Button Face Engraving Available Upon Request \*\*

##### Button Colour

- B - Standard colour, Black
- R - Red
- G - Gray
- W - White

Order the NEXUS switch number shown in **BOLD FACE** below the MS25089-XX number. For white buttons, substitute "W" for "B" in the NEXUS part number.

## Nexus Switches

### Contact Pambry Electronics at

Pambry Electronics Limited  
Pambry House  
Units 7 & 8 Ventura Centre  
Ventura Place, Upton Industrial Estate  
Upton, Poole, Dorset BH16 5SW  
United Kingdom

#### By telephone

+44 (0)1202 624910

#### By fax

+44 (0)1202 632452