

## Pambry Stocked Gavitt Wire



# Pambry Stocked Gavitt Wire



<b>Gavitt Cables (Coiled and Straight)</b>									
<u>Part No.</u>	<u>Core Construction</u>	<u>Outer Matl</u>	<u>Conductor Material</u>	<u>Outer Dia.</u>	<u>Drawing</u>	<u>Comments</u>	<u>coiled/ straight</u>	<u>Retracted Length</u>	<u>Tails</u>
<a href="#">G-7950070</a>	5 core (1 screened) + tie cord	polyurethane	#28 AWG 19/40	4.1mm	Yes	non RoHS (PAMSPC101)	coiled	380mm	
<a href="#">G-7950070-1M</a>	5 core (1 screened) + tie cord	polyurethane	#28 AWG 19/41	4.1mm	Yes	RoHS	straight		
G-7980060	6 core (3 twisted pairs, each pair screened)	polyurethane	#26 AWG 19/38 silver plated alloy	6.8mm	No	Bailout	coiled	10"	20" & 12"
<a href="#">G-7980071</a>	5 core (1 screened) + tie cord	polyurethane	#28 AWG 19/41	4.1mm	Yes	RoHS (straight G-7950070-1M)	coiled	200mm	
<a href="#">G-7980072</a>	5 core (1 screened) + tie cord	polyurethane	#28 AWG 19/41	4.1mm	Yes	RoHS (straight G-7950070-1M)	coiled	300mm	
G-7980121	5 core coiled						coiled	1.1 metre	
<a href="#">G-7980140</a>	6 core coiled (2 screened)	polyurethane	#28 AWG 19/40	4.3mm	Yes		coiled	460mm	180mm
G-7980142	???								
G-7980166	5 core (1 screened) + tie cord	polyurethane		4.1mm	No	40 turn coiled cable	coiled	170mm	
<a href="#">G-7980219</a>	7 core (two shielded tw. Pairs + triplet)	polyurethane	#26 AWG 19/38 tinned copper	6.35mm	Yes	coiled (straight version = G-9501077)	coiled	125mm	150mm
G-7980223	8 core (6 singles + 1 tw pr scm + overall scm)	polyurethane	6 off #28AWG(19/40) 2 off 26(19/38)	4.7	No		coiled		
G-7980230/B/R/Y	mass consultants initial quote ???								
G-7980353	5 core coiled						coiled	850mm	320mm
G-7980360-BLACK	6 core (3 twisted pairs, one pair screened) + strain cord	polyurethane	#26 AWG 19/38 silver plated alloy	6.8mm	No	Mass Consultants	coiled	500mm	250mm
G-7980360-RED	6 core (3 twisted pairs, one pair screened) + strain cord	polyurethane RED	#26 AWG 19/38 silver plated alloy	6.8mm	No	Mass Consultants	coiled	1000mm	250mm
G-7980360-YELLOW	6 core (3 twisted pairs, one pair screened) + strain cord	polyurethane YELLOW	#26 AWG 19/38 silver plated alloy	6.8mm	No	Mass Consultants	coiled	500mm	250mm 300mm & 150mm
G-7980388	7 core (two shielded tw. Pairs + triplet)	polyurethane	#26 AWG 19/38 tinned copper	6.35mm	No	coiled (straight version = G-9501077)	coiled	125mm	
<a href="#">G-7980399</a>	4 core (two shielded pairs + overall screen)	polyurethane	#27 AWG 50/44 bare copper	5.2mm	Yes		straight		
<a href="#">G-7980399cc</a>	4 core (two shielded pairs + overall screen)	polyurethane	#27 AWG 50/44 bare copper	5.2mm	Yes		coiled	700mm (3.5m extended)	150mm
G-7980419	8 core (4 twisted pairs, each pair screened)	polyurethane	#26 AWG 19/38 silver plated alloy	7.3mm	No	Bailout (Binaural)	coiled	10"	20" & 12"
G-9500085	2 core ???								
<a href="#">G-9500086</a>	3 core (1 screened)	polyurethane	#25 AWG 37/40	4.6mm	Yes		straight		
G-9500087	4 core (1 screened)						straight		
G-9500176	3 core (1 screened)						straight		
<a href="#">G-9500265</a>	6 core (5 singles, 1 core screened) + drain wire + overall aluminium wrap	polyurethane	HTCC (High Temp Co fired Ceramic)	4.7mm	Yes		straight		

# Pambry Stocked Gavitt Wire



<a href="#">G-9500267</a>	2 core + overall screen	polyurethane	#31 AWG 7/39HTCC	2.16mm	Yes		straight	
<a href="#">G-9500308</a>	17 core (1 screened, 16 unscreened)	polyurethane	tinned copper	7mm	Yes		straight	
G-9500309	2 core (yellow/blue) ???							
<a href="#">G-9500370</a>	7 core (1 tw pair screened + 5 singles)	polyurethane	#26 AWG 19/38 HTCC	4.7mm	Yes	used by Gentex	straight	
G-9500427	1 core coaxial ???					flesh coloured		
<a href="#">G-9500504</a>	2 core (red/white) + overall screen	Polyurethane	#25 AWG 37/40 HTCC	4mm	Yes	Cobham Romic mic cable	straight	
<a href="#">G-9500546</a>	2 core + overall screen	polyurethane	#31 AWG 7/39HTCC	1.9mm	Yes		straight	
<a href="#">G-9500579</a>	6 core (3 twisted pairs, each pair screened + overall screen)	polyurethane	stranded copper	7.6mm	No	PTT Box, Cobham 2100188, CE-UK 00008	straight	
G-9500701-1	5 core ???							
G-9500702	3 core ???							
<a href="#">G-9500730</a>	4 core (2 twisted pairs, each pair screened) + overall braided shield + tie cord	polyurethane	#28 AWG 19/40 tinned copper	4.1	Yes	EFA	straight	
<a href="#">G-9500731</a>	3 core + overall spiral shield	polyurethane	#32 AWG 7/40 tinned copper	1.78	Yes			
<a href="#">G-9500793</a>	4 core + tie cord	polyurethane	#26 AWG 19/38 tinned copper	4.2mm	Yes	Pektron	straight	
<a href="#">G-9500827</a>	12 core (6 twisted pairs) + overall spiral screen	polyurethane	#26 AWG 19/38 tinned copper	5.4mm	Yes		straight	
G-9500838	6 core screened ???							
G-9500898	6 core (3 twisted pairs each pair screened) + overall braid	polyurethane	#28 AWG 19/40 hard tinned alloy	5.5			straight	
<a href="#">G-9500924</a>	2 core	polyurethane	#20 AWG 19/32 tinned copper	4.2	Yes	Pektron	straight	
G-9500975	???							
G-9500978	6 core (3 twisted pairs, each pair screened)	polyurethane	stranded copper	5.3mm	No	Cobham PED0035	straight	
<a href="#">G-9501008</a>	2 core	polyurethane	46/40 HTCC	4.06mm	Yes	Gov't WD-34/U	straight	
<a href="#">G-9501013</a>	10 core (1 screened) + overall braid shield	polyurethane	#24 AWG 19/36 tinned copper	6.7mm	Yes		straight	
<a href="#">G-9501036</a>	6 core (3 screened twisted pairs) + overall spiral screen	polyurethane	#30 AWG 19/42 tinned copper	4.8mm	Yes		straight	
<a href="#">G-9501068</a>	6 core (1 screened) + overall screen	polyurethane	#26 AWG tinned copper	6mm	Yes	Used on WIBA PED 0085	straight	
G-9501077	7 core (two shielded tw. Pairs + triplet)	polyurethane	#26 AWG 19/38 tinned copper	6.35mm	No	straight version of G-7980219	straight	

## Pambry Stocked Gavitt Wire

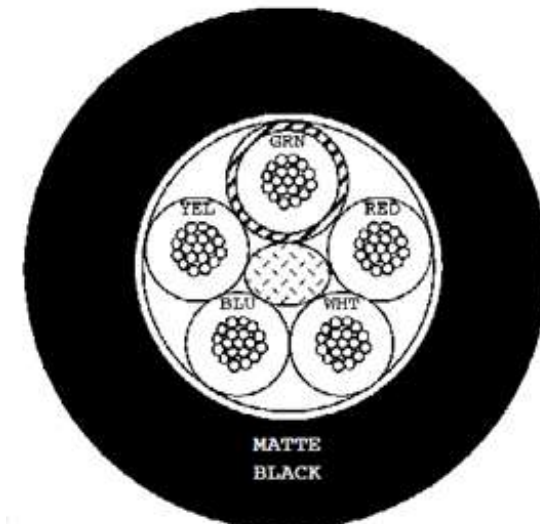
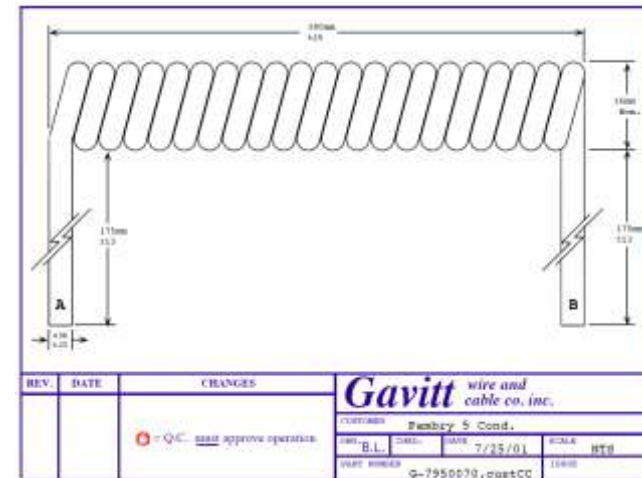


G-9501225	8 core (6 singles + 1 tw pr scm + overall scm)	polyurethane	6 off #28AWG(19/40) 2 off 28(19/38)	4.7	No	Trilogy Headset PED 0268	straight		
G-9690005	5 core ???								
<a href="#">SK10201</a>	8 core (6 singles + 1 tw pr scm + overall scm)	polyurethane	6 off #28AWG(19/40) 2 off 28(19/38)	4.7	No	Peter adams / coiled version of G-9501225	Coiled	3ft	2ft

## Pambry Stocked Gavitt Wire



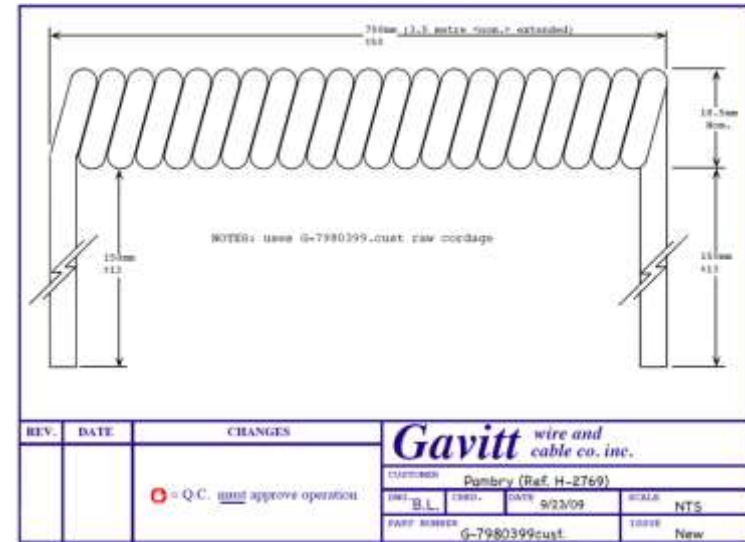
<b>Part No</b>	G-9241046, G7950070
Conductors:	28 AWG 19/40 HT HPC-80EF
Insulation:	Polypropylene to 0.8mm
Colours:	Green, Red, White, Blue & Yellow
Screen:	Over Green conductor 92% cover
Outer Jacket:	Matt black overall to Ø4.0mm



## Pambry Stocked Gavitt Wire



<b>Part No</b>	G-7980399
<b>Conductors:</b>	27 AWG 50/44 Bare copper
<b>Insulation:</b>	Polypropylene to 0.8mm
<b>Colours:</b>	Red, Gren, White & Black
<b>Screen:</b>	Overall 97% coverage
<b>Outer Jacket:</b>	Matte black overall to Ø5.2mm



## Pambry Stocked Gavitt Wire



<b>Part No</b>	G-9500086
<b>Conductors:</b>	25 AWG 37/40 High strength cad free alloy
<b>Insulation:</b>	Polypropylene to 1.2mm
<b>Colours:</b>	Blue, Black & Red
<b>Screen:</b>	Over Red only 97% coverage
<b>Outer Jacket:</b>	Matt black overall to Ø4.6mm



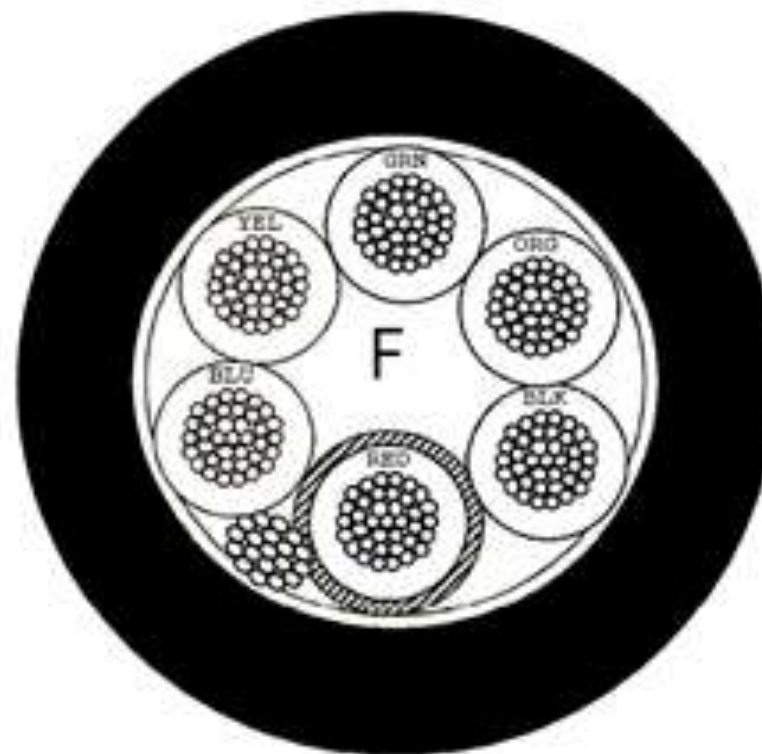
## Pambry Stocked Gavitt Wire

**Part No** G-9500265

**Conductors:** 25 AWG 37/40 HTCC  
**Insulation:** Polypropylene to 1mm  
**Colours:** Blue, Yellow, Green, Orange  
Black & Red

**Screen:** Red Shielded

**Outer Jacket:** Matt black overall to  
Ø4.7mm



## Pambry Stocked Gavitt Wire



<b>Part No</b>	G-9500308
<b>Conductors:</b>	24 AWG 19/36 Tinned Copper
<b>Insulation:</b>	Polypropylene to 1mm
<b>Colours:</b>	White, Dk Red, Lt Red, Dk Blue, Lt Blue, Dk Green, Lt Green, Dk Yellow, Lt Yellow, Dk Brown, Lt Brown, Black, Grey, Dk Violet, Dk Orange, Lt Orange
<b>Screen:</b>	White Shielded 97% coverage
<b>Outer Jacket:</b>	Matt black overall to Ø7mm



## Pambry Stocked Gavitt Wire



**Part No** G-9500370

**Conductors:** 26 AWG 19/38 HTCC  
**Insulation:** Polypropylene to 0.9mm  
**Colours:** Green, Red, Black, White, Yellow,  
Blue & Brown

**Screen:** Shielded twisted pair

**Outer Jacket:** Matt black overall to  
Ø4.7mm



## Pambry Stocked Gavitt Wire



**Part No** G-9500504

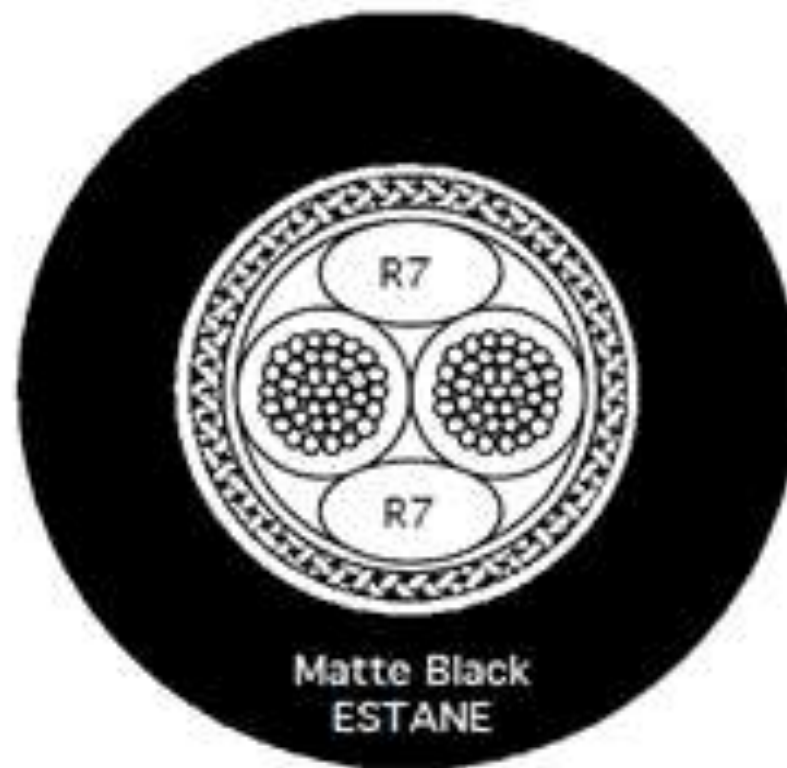
**Conductors:** 25 AWG 37/40 HTCC

**Insulation:** Teflon to 0.9mm

**Colours:** Red & White

**Screen:** Over above with braid  
93% coverage

**Outer Jacket:** Matt black overall to  
Ø3.9mm



## Pambry Stocked Gavitt Wire

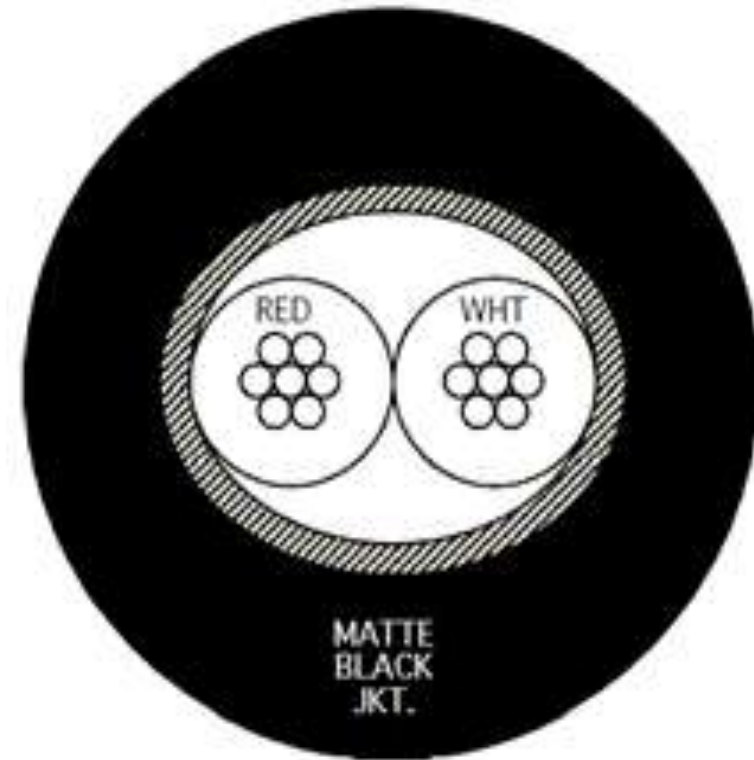


**Part No** G-9500546

**Conductors:** 31 AWG 7/39 HTCC  
**Insulation:** Polypropylene to 0.5m  
**Colours:** Red & White

**Screen:** Over all  
98% coverage

**Outer Jacket:** Matt black overall to  
Ø1.9mm



## Pambry Stocked Gavitt Wire



**Part No** G-9500579

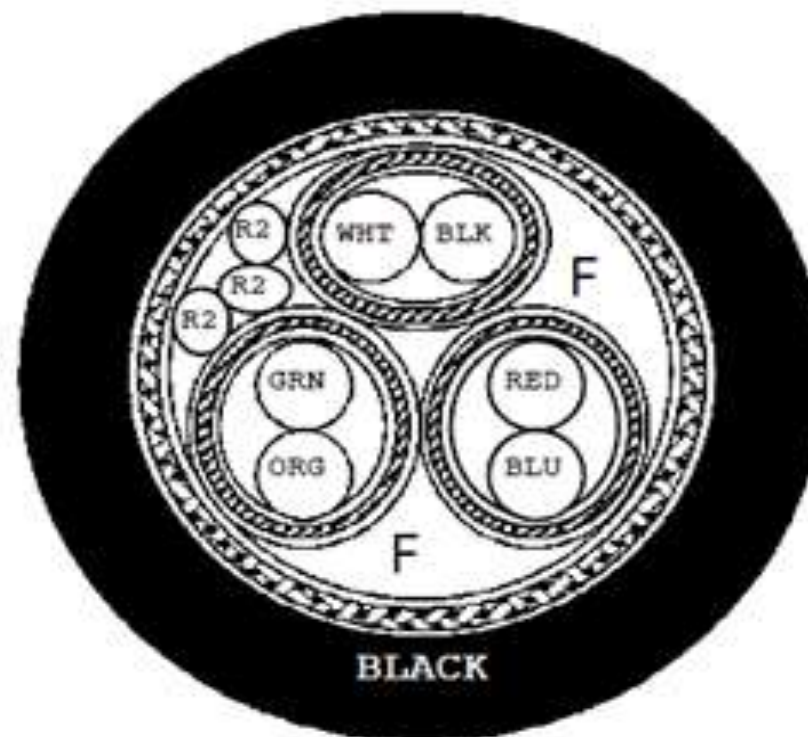
**Conductors:** 26 AWG 19/38 SP Alloy 135

**Insulation:** Teflon to 0.9mm

**Colours:** Three pairs: Wht/Blk, Red/Blu  
& Grn/Org

**Screen:** Over each pair with 98%  
coverage

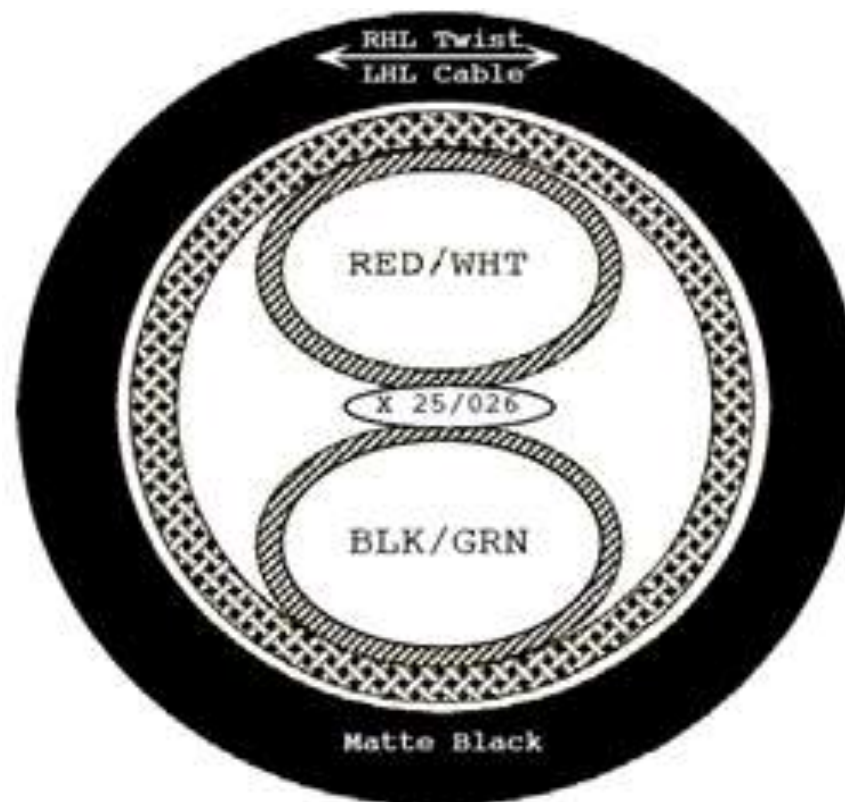
**Outer Jacket:** Matt black overall to  
Ø7.3mm



## Pambry Stocked Gavitt Wire



<b>Part No</b>	G-9500730
<b>Conductors:</b>	28 AWG 19/40 Tinned Copper
<b>Insulation:</b>	Polypropylene to $\varnothing$ 6.0mm
<b>Colours:</b>	Red/White & Black/Green
<b>Screen:</b>	Braid overall 90% coverage
<b>Outer Jacket:</b>	Matt black overall to $\varnothing$ 4.0mm



## Pambry Stocked Gavitt Wire



**Part No** G-9500793

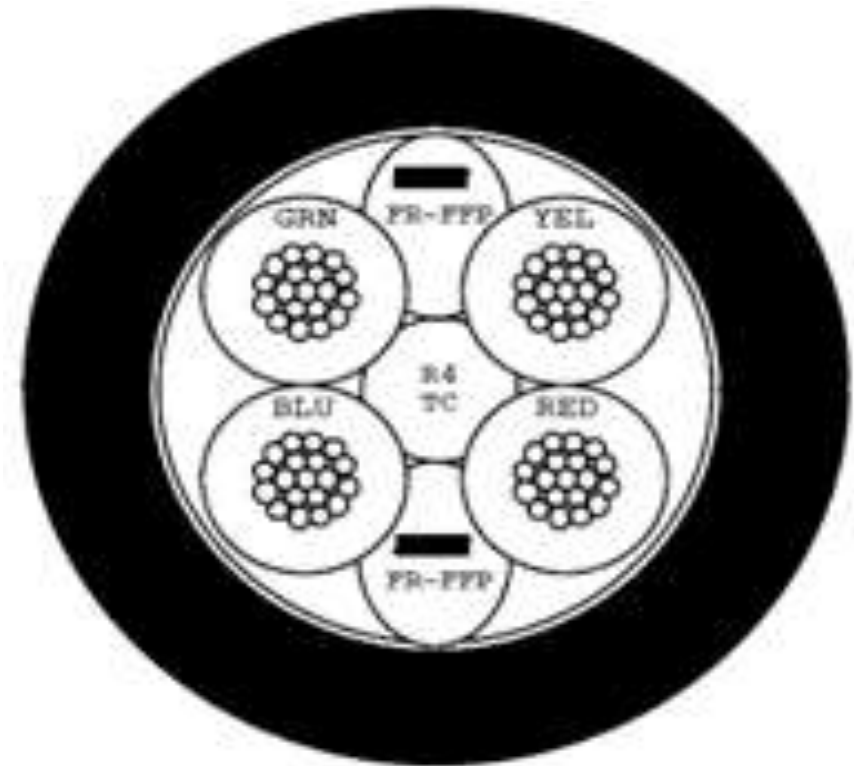
**Conductors:** 26 AWG 19/38 Tinned Copper

**Insulation:** Tefzel to  $\varnothing$ 1mm

**Colours:** Green, Yellow, Red & Blue

**Screen:**

**Outer Jacket:** Matt black overall to  $\varnothing$ 4.2mm



## Pambry Stocked Gavitt Wire



### Part No

G-9500827

Conductors: 26 AWG 19/38 Tinned Copper  
Insulation: Polypropylene to  $\varnothing 0.7\text{mm}$   
Colours: Orange, Yellow, Violet, Clear,  
Red, Pink, Green, White, Black,  
Blue, Brown & Grey

Screen: Overall  
96% coverage

Outer Jacket: Matt black flame retardant overall  
 $\varnothing 5.3\text{mm}$



## Pambry Stocked Gavitt Wire

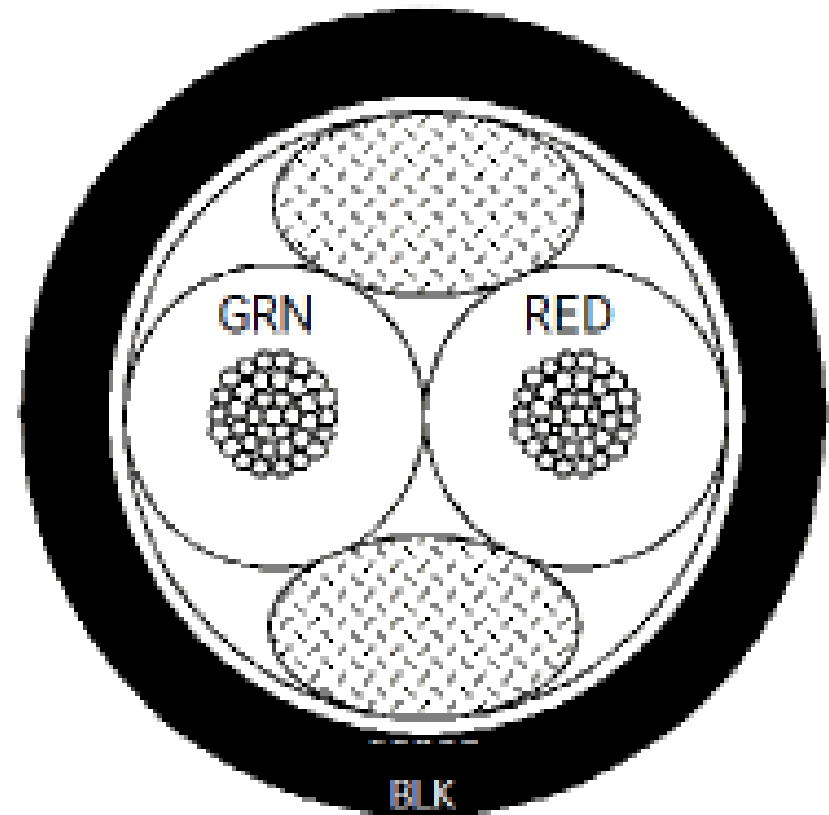


**Part No** G-9501008

Conductors: 24 AWG 46/40 FT  
Insulation: Polyethylene to Ø5.4  
Colours: Red & Green

Screen:

Outer Jacket: Matt black flame retardant overall  
Ø4.03mm



## Pambry Stocked Gavitt Wire



**Part No** G-9501013

**Conductors:** 24 AWG 19/36 TC  
**Insulation:** Polypropylene  $\varnothing$ 1mm  
**Colours:** Yellow, Red, Blue, Green, Violet,  
Grey, White, Brown, Orange &  
Black

**Screen:** Overall

**Outer Jacket:** Matt black  
 $\varnothing$ 6.7mm



## Pambry Stocked Gavitt Wire



**Part No** G-9501036

Conductors: 30 AWG 19/42 Tinned Copper  
Insulation: Polypropylene  $\varnothing$ 0.6mm  
Colours: White, Black, Orange, Green,  
Red & Blue

Screen: Spiral

Outer Jacket: Matt black  
 $\varnothing$ 4.8mm



## Pambry Stocked Gavitt Wire

**Part No** G-9501068

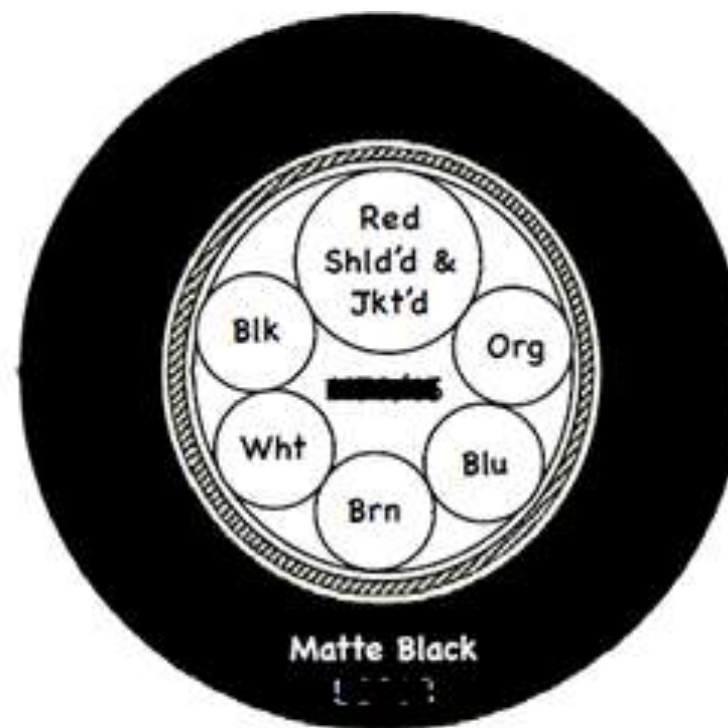
**Conductors:** 26 AWG 26/40 Tinned Copper

**Insulation:** Polypropylene  $\varnothing$ 1mm

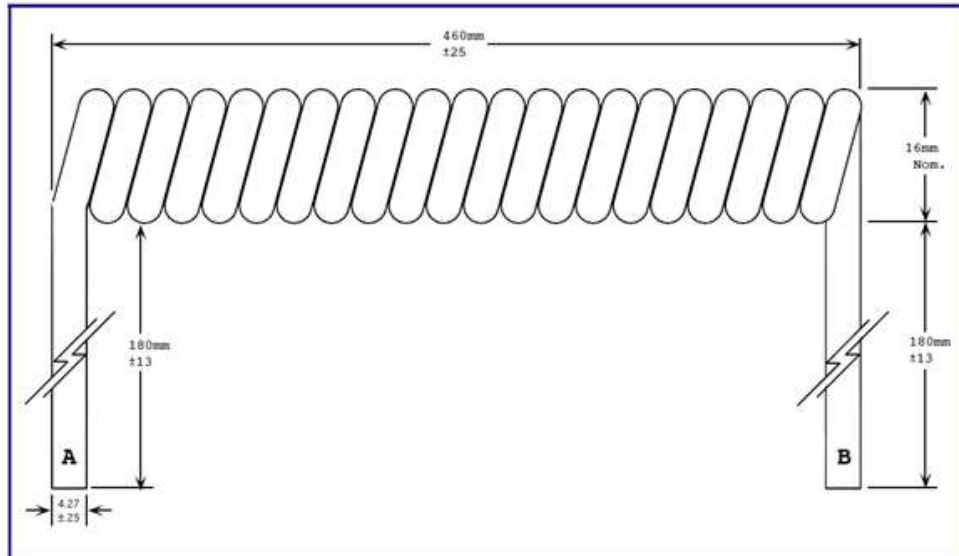
**Colours:** White, Black, Red, Orange  
Blue & Brown

**Screen:** Overall Spiral

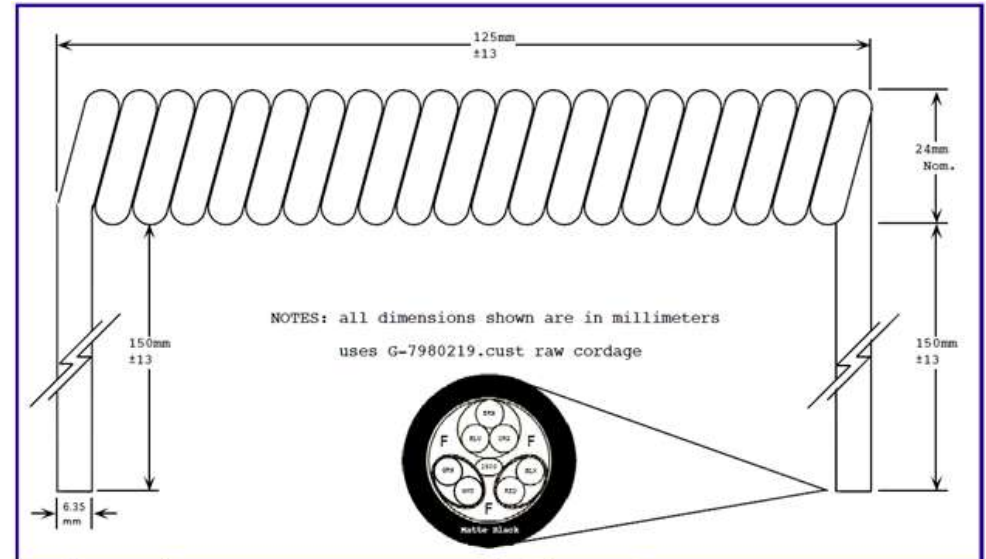
**Outer Jacket:** Matt black  
 $\varnothing$ 6.4mm



# Pambry Stocked Gavitt Wire



REV.	DATE	CHANGES	<b>Gavitt</b> wire and cable co. inc.	
			CUSTOMER <b>Pambry 6 Cond.</b>	
		ⓐ = Q.C. <u>must</u> approve operation	DWG. B.L.	DATE 4/23/10 SCALE NTS
			PART NUMBER	ISSUE
			G-7980140.custCC	



REV.	DATE	CHANGES	<b>Gavitt</b> wire and cable co. inc.	
			CUSTOMER <b>Pambry (Ref. H-2235)</b>	
		ⓐ = Q.C. <u>must</u> approve operation	DWG. B.L.	DATE 6/13/03 SCALE NTS
			PART NUMBER	ISSUE
			G-7980219custCC	A

## Pambry Stocked Gavitt Wire



### Contact Pambry Electronics at

Pambry Electronics Limited  
Pambry House  
Units 7 & 8 Ventura Centre  
Ventura Place, Upton Industrial Estate  
Upton, Poole, Dorset BH16 5SW  
United Kingdom

#### By telephone

+44 (0)1202 624910

#### By fax

+44 (0)1202 632452